

824

Rabbit Peak

Leader: Irene Adam

Time 9:30 AM

Distance 3.1 miles one way/ elevation gain 1,700'

Driving directions:

Drive North on Angeles Crest Highway 9.5 miles from I-210 at La Canada to Angeles Forest Highway at Clear Creek. Continue about 9.4 miles on Angeles Forest Highway. Turn right into Monte Cristo Camp Ground and park.

The hike:

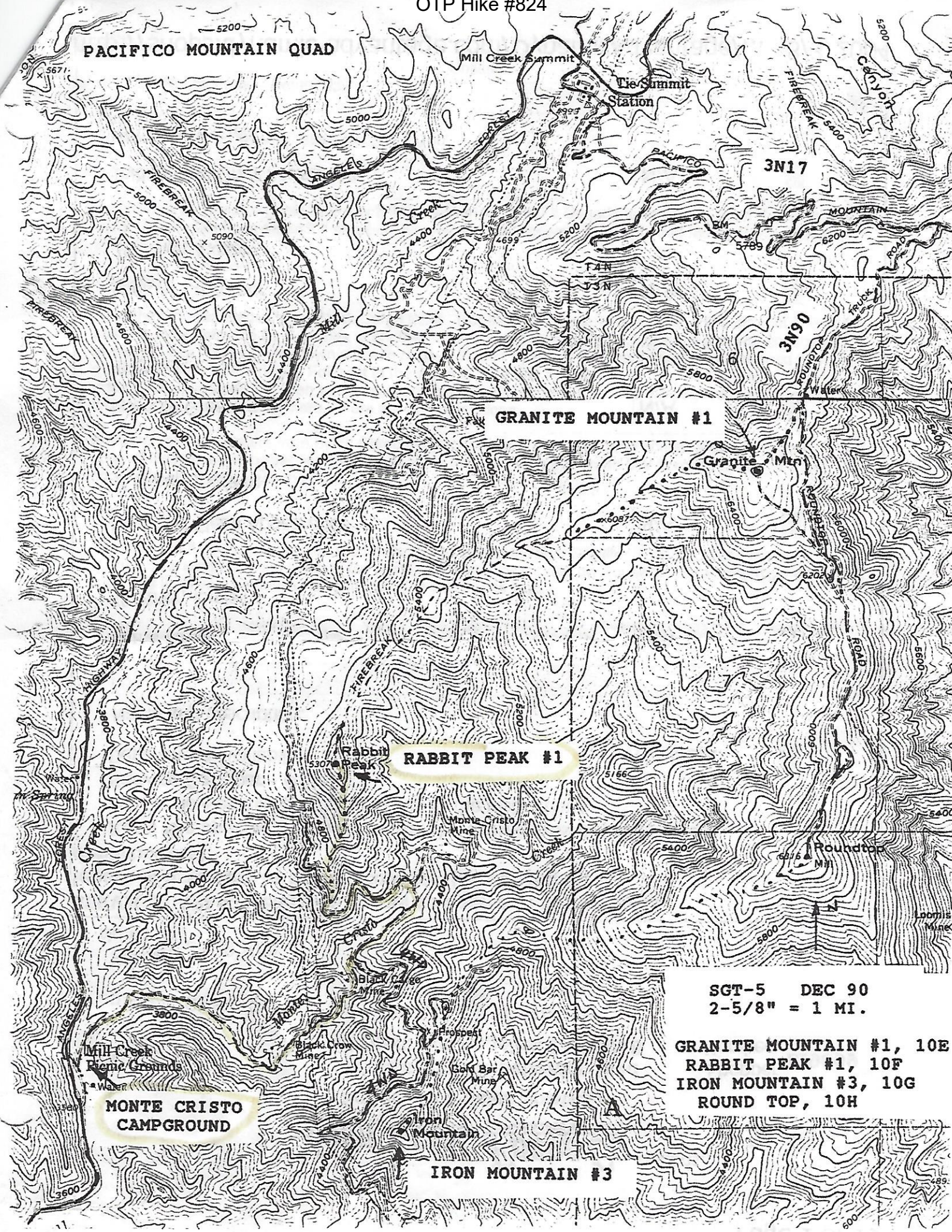
Take the dirt road leading past Black Cargo Mine. Hopefully we will see fall leaves. Hike straight ahead past the mine entrance for 0.5 miles to another road fork; turn left and go 0.5 miles to a power line tower at the end of a ridge coming down a South ridge of Rabbit Peak #1. 200 yards farther on the road there is a firebreak path up the ridge. Follow it to the summit. The first 15 feet rise off the road is steep, insubstantial, and difficult. Ten years ago because we differed on which was the beginning spot, we went cross-country. That is easy here. There are no obstructions.

A shorter, steeper ascent from Black Cargo Mine to the point where the road comes around the South ridge of Rabbit near a power line tower is to circle the mine up a poor road SW from the mine, gain the ridge, and climb it North to the road.

The long hike:

13 miles with 3,000 gain but rated moderate. Make a loop trip with Granite, Round Top and Iron #3 starting on a firebreak from Rabbit. Go North to Granite, then south on Round top Road and Round top to Iron. This is all very obvious once you start so I won't write it up.

PACIFICO MOUNTAIN QUAD



GRANITE MOUNTAIN #1

RABBIT PEAK #1

MONTE CRISTO CAMPGROUND

IRON MOUNTAIN #3

SGT-5 DEC 90
2-5/8" = 1 MI.

GRANITE MOUNTAIN #1, 10E
RABBIT PEAK #1, 10F
IRON MOUNTAIN #3, 10G
ROUND TOP, 10H