

OTP Hike #557

SANTA ROSA PLATEAU Ecological Reserve, April 4, Sally Spotts, 9:30 start.

Per a 3/23 phone call to the Reserve, the flowers are wonderful. If we don't have bad heat it could still be good on 4/4. This is tick season; bring repellent & stay on paths. In general this is easy mostly flat hiking.

There are mesas, maybe 500'?

\$2 FEE per person. The Reserve is not a public park, belongs to Nature Conservancy.

THE DRIVE! and START: South on I-15 approximately 24 miles from Corona, past Lake Elsinore, to Clinton-Keith exit. Turn right on Clinton-Keith and go approx. 2 miles to the Visitor's Center on the left side of the road. We will pick up maps, pay fee and sort out the shuttling of cars to Hidden Valley. The hike starts at the Visitor Center.

END OF HIKE AND REFRESHMENTS will be at Hidden Valley trailhead which is past the Visitor Center, further along on Clinton-Keith.

LUNCH SITE: at the 1850s-60s adobe, part of Mexican Land Grant of 1846 granted to Juan Moreno by Governor Pio Pico.

POSSIBLE GROUPS: We will all start at the Visitor Center and walk the eastern perimeter trails to the adobe where we will eat lunch. Each group is to keep in visual contact with all its members. Each group must have map. A compass would be useful.

*** ALL PERIMETER, 8 - 8.5 mile hike: hike all the perimeter trails from the Visitor Center to Hidden Valley.

*** COMBO, 8 - 8.5 mile hike, hike the perimeter trails to vernal pools on Mesa de Colorado and then take the interior Trans Preserve Trail to Hidden Valley.

*** SHORTER 6.5 mile hike: hike the eastern perimeter trail to the adobe and then cross over to Poppy Hill and take Trans Preserve Trail to Hidden Valley. (No vernal pools)

*** Fast movers only: Add 1.5? miles for side trip off of eastern perimeter trail to climb Monument Hill.

Beat the traffic? Leave early for breakfast at Dennys in Lake Elsinore. Take the Diamond Drive exit on I-15. Turn left under the freeway (Canyon Railroad?) and right at Grape. You can see it from the freeway, left side going south. 909-245-5058. Dennys is approx. 26 miles from Visitor Center.

SANTA ROSA PLATEAU ECOLOGICAL RESERVE

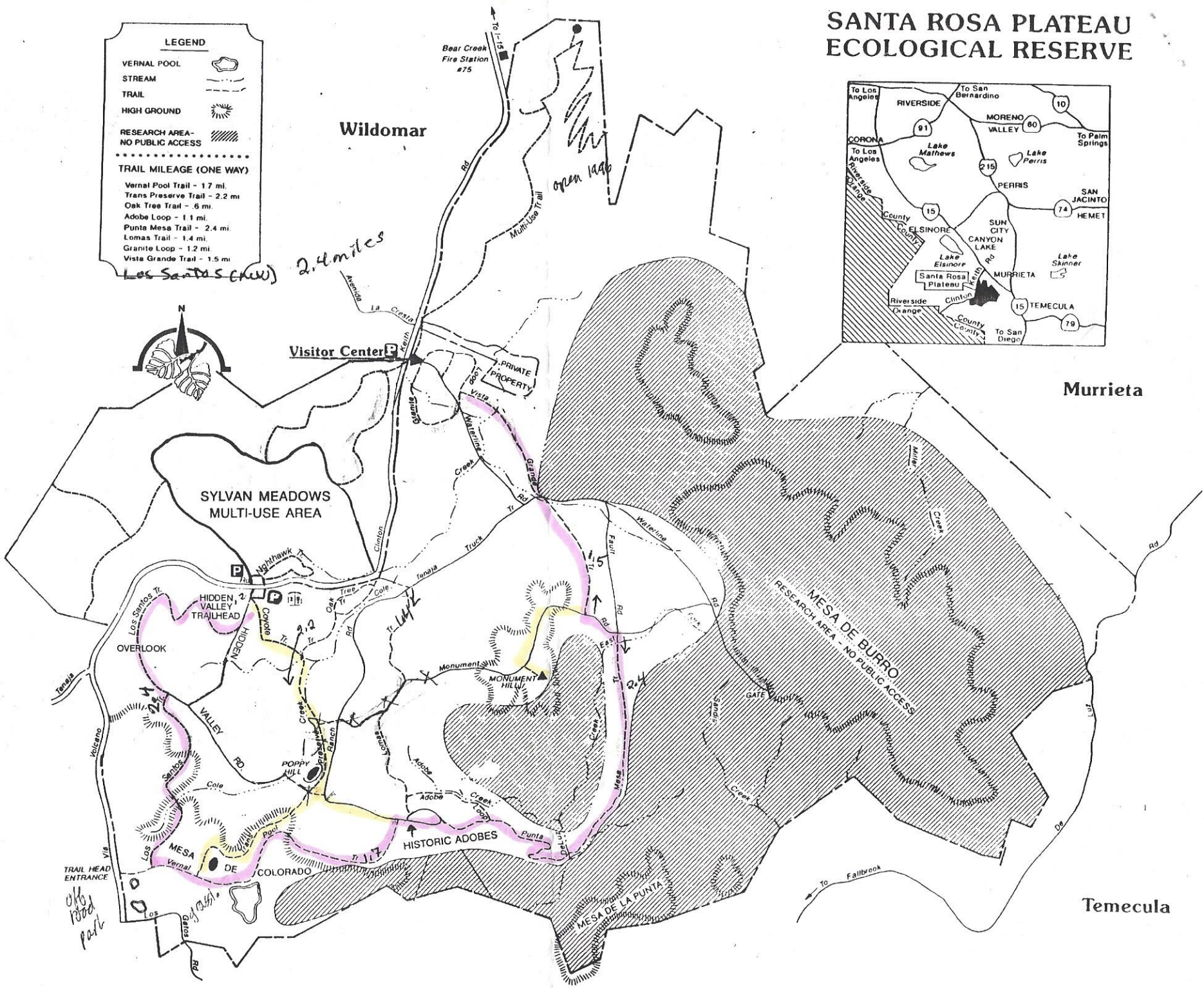
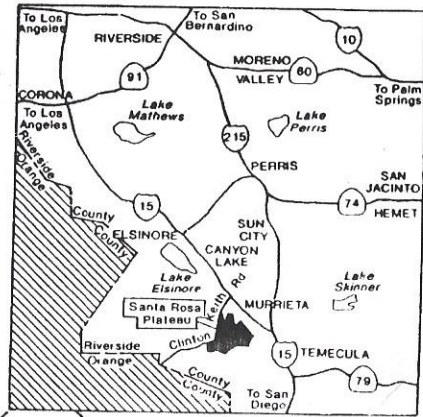
LEGEND

- VERNAL POOL 
- STREAM 
- TRAIL 
- HIGH GROUND 
- RESEARCH AREA - NO PUBLIC ACCESS 

TRAIL MILEAGE (ONE WAY)

- Vernal Pool Trail - 1.7 mi.
- Trans Preserve Trail - 2.2 mi.
- Oak Tree Trail - .6 mi.
- Adobe Loop - 1.1 mi.
- Punta Mesa Trail - 2.4 mi.
- Lomas Trail - 1.4 mi.
- Granite Loop - 1.2 mi.
- Vista Grande Trail - 1.5 mi.

Los Santos (NW)



king
s:
it all
ted,
rial,
g or
ited
l by
ted.
ling
are
are
erve
ked
estic
cate
only
e of
and
port
erve
e n
or