

Santa Ynez Canyon Loop or 1/2 Loop  
Via Temescal Peak  
3.8 miles of the Backbone Trail



OTP Hike # 476 - 7/21/99 - 9:30 AM - Dick Battin

	Planned Hike(Loop)	Alternate Hike(1/2 Loop)
Distance	10.5 miles	7.7 miles
Total Elevation Gain	1800 Ft.	1200 Ft.
Hiking Time	5 hours	3 1/2 hours
Start/end point	Trippet Ranch	Trippet Ranch
Directions	101- South on Topanga Cyn. Blvd. 7.6 miles (4.6 miles from PCH) Entrada Road East 1.1 miles always turning left to Trippet Ranch	

**Planned Hike:** This hike will go down into Santa Ynez Canyon, thru the edge of a housing development, up Trailer Canyon fire road to Temescal Ridge and Temescal Peak, continue to Eagle Rock and drop down to the Musch Trail to Trippet Ranch.

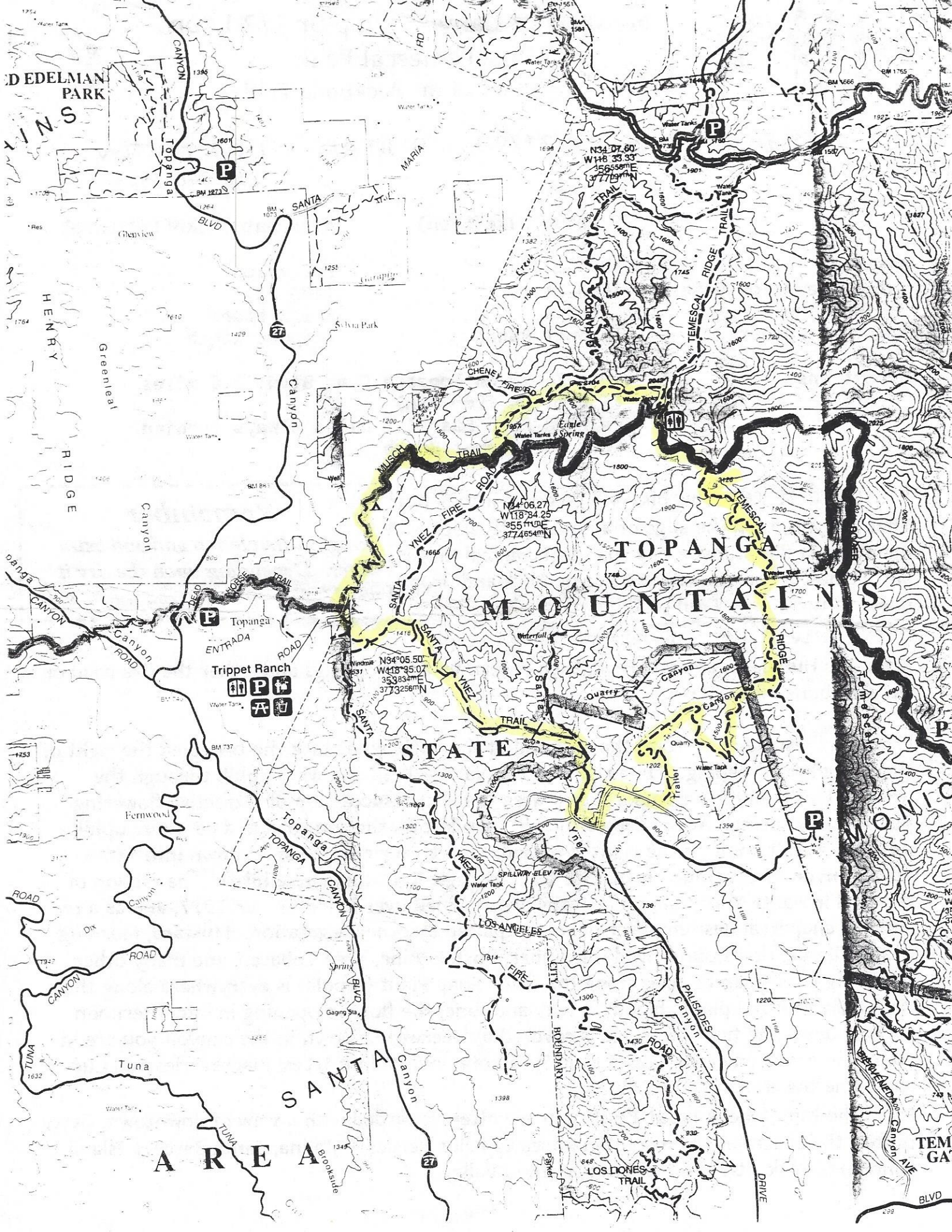
*Remember*  
*Bring suntan lotion and and extra water. Depending upon the day it will be pleasant or on the warm side.*

**Alternate Hike:** This hike will go up to Eagle Rock, the Hub and Temescal Peak, then return by Eagle Springs and either the fire road or the Backbone Musch Trail.

From "Milt McAuley": From the east end of the parking lot take the trail past the right of the white brick building. Turn right on the Nature Trail and wind uphill through the woods. This trail goes across a grassy area that has a succession of attractive flowering plants every spring. At the top of the hill turn left on the fire road and continue uphill until the basalt knoll on the right is passed, then turn right and start down into Santa Ynez Canyon or continue on the fire road to Eagle Rock (alternate hike). The section of the trail in Santa Ynez Canyon is in the area burned over in November 1977, and as a result the chaparral has temporarily been replaced by other vegetation. Mustard, Morning Glory, Filaree, Horehound, Wild Cucumber, Bush Lupine, Tree Tobacco, and many other flowering plants can be seen along the trail. Soap Plant (Amole) is everywhere along the ridge. Six foot tall plants bloom in May and June, the flowers opening in late afternoon. Farther down the trail, the ridge is covered by deerweed. Down in the canyon you are instantly in a new environment of Oak, Sycamore, and Walnut trees; Blackberries and Currants line the trail. Etc. Etc. Etc.

From the top of Temescal Peak you are often rewarded with a view of downtown, Getty center, the beach line from Santa Monica to Palos Verdes, Catalina, Santa Barbara Island, Sandstone Peak, etc. and the San Fernando Valley.





D EDELMAN PARK

HENRY RIDGE

TOPANGA MOUNTAINS

Topanga ENTRADA

Fernwood

Tuna

SANTA MONICA STATE PARK

AREAS

TOPANGA CANYON

SANTA MONICA BLVD

Topanga Canyon

Topanga ENTRADA ROAD

Topanga CANYON

SANTA MONICA CANYON

MAPRIA

SANTA MONICA TRAIL

CHENE FIRE RD

SANTA MONICA TRAIL

LOS ANGELES CITY FIRE

LOS ANGELES CITY FIRE

Water Tanks

Water Tanks

Water Tanks

Waterfall

Water Tank

Water Tank

Water Tanks

Water Tanks

Water Tanks

Quarry

Quarry

Quarry

Water Tanks

Water Tanks

Water Tanks

Water Tank

Water Tank

Water Tank

Water Tanks

Water Tanks

Water Tanks

Water Tank

Water Tank

Water Tank

N34°06.27' W118°34.25' 355 ft UTM 3774654mN

N34°05.50' W118°35.07' 353834mE 3773256mN

N34°07.60' W118°33.33' 356558mE 377767mN

N34°05.50' W118°35.07' 353834mE 3773256mN

N34°05.50' W118°35.07' 353834mE 3773256mN

N34°05.50' W118°35.07' 353834mE 3773256mN

TOPANGA MOUNTAINS

STATE

LOS ANGELES CITY FIRE

LOS LIONES TRAIL

TEME GATI